

House Design Evaluation

The house design I chose to evaluate is a contemporary architectural style having Bungalow and Georgian style influences. The Bungalow architectural style influences include the incised porch beneath the main roof, tapered square columns supporting the porch, the six-in-one sashed windows, and the mixed exterior materials of siding and brick. The Georgian style characteristics borrowed in the contemporary style include the transom lights over the windows, and the classic detailing of narrow siding, steep roof with dormers, and the close eaves and short roof overhangs.

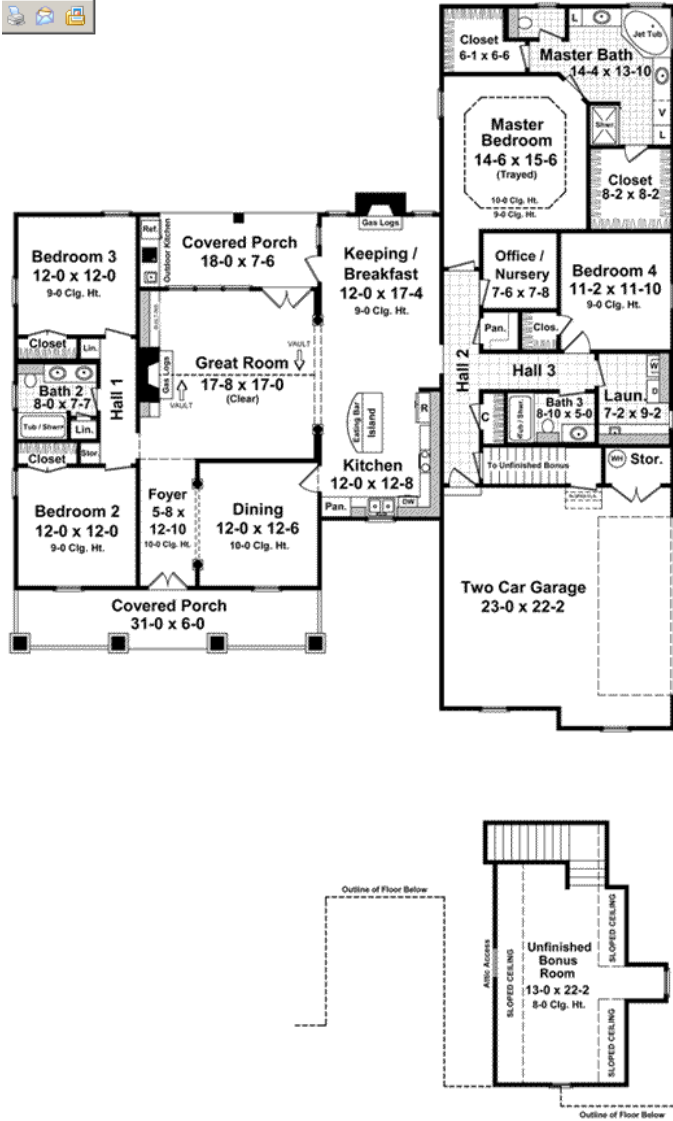


This house appears to be a one and one-half story design, but the plan is actually a one-story with an optional bonus room over the garage. The 4-3-2 floor plan includes four bedrooms, three full bathrooms, and a two-car garage accessible from the side.

The room sizes are large and positioned well throughout the plan. I like the idea of an office/nursery next to the master bedroom, and the fourth bedroom location is ideal for a guest or “mother-in-law” bedroom with its own full bathroom. The placement of the other rooms and areas to each other makes for an efficient plan for privacy and traffic circulation. The high ceilings and vaulted ceilings throughout make the rooms and spaces appear larger and more formal/elegant. What I like the best about the house plan is the layout of the master bedroom and bathroom. The bedroom is large with a trayed high ceiling, a luxurious bathroom with plenty of counter space, and the large his and hers closets. Who wouldn’t feel like a “master” living in that space?

Although I really like this plan, there are some changes that I believe would make it even better. First, I would take out the linen closet in Hall 1 and add that space to the bedroom closet in Bedroom 3. Second, I would create a coat closet where the Bath 2 and Hall 1 linen closets are. Third, I would redesign Bath 2 so that the tub and toilet area is separate from the sink area allowing more privacy in the space. Next, I would remove the fireplace in the breakfast area and shift the breakfast area and kitchen toward the front of the house allowing for a larger covered back porch and improving the traffic circulation between the kitchen, dining room, and great room. I would consider redesigning the kitchen in a u-shaped design with a peninsula counter or bar as a room divider with the breakfast area. Including an exterior door or French doors in the Master Bedroom would be a nice touch. There is quite a lot of hall space in the plan, but it is unavoidable due to the size of the floor plan and the spaces being spread over a large area.

In closing, I would like to say that even though I have proposed a number of subtle changes, the overall plan demonstrates efficient use of its large spaces. The plan is functional as well as beautiful.



Works Cited

"Eplans Country House Plan - Inviting Country Home With Upscale Features - 1800 Square Feet and 3 Bedrooms from Eplans - House Plan Code HWEPL13689." *Eplans Country House Plan - Inviting Country Home With Upscale Features - 1800 Square Feet and 3 Bedrooms from Eplans - House Plan Code HWEPL13689.* Eplans, n.d. Web. 20 Sept. 2013. <<http://www.eplans.com/house-plans/epl/hwepl13689.html?from=search>>.

"Architecture, Landscape, and Urban Design." *Architecture Landscape and Urban Design.* Architecture Landscape and Urban Design, n.d. Web. 20 Sept. 2013. <<http://architecturestyles.org/craftsman/>>.

Craven, Jackie. "1690s - 1830: Georgian Colonial House Style." *About.com Architecture.* About.com, n.d. Web. 20 Sept. 2013.